

SOFTWARE

ekey TOCAhome pc

Published by:

ekey biometric systems GmbH

Lunzerstraße 64

A-4030 Linz

office@ekey.net • www.ekey.net

1. PURPOSE OF THIS DOCUMENT	3
<hr/>	
2. SYSTEM REQUIREMENTS	3
<hr/>	
3. ASSEMBLY, INSTALLATION AND INITIAL USE	3
<hr/>	
4. CONFIGURATION AND SETTINGS	5
4.1. CONFIGURATION	5
4.2. CREATING A CONNECTION	7
4.3. CHANGING THE PASSWORD	7
4.4. RELAY SWITCH TIMES	8
<hr/>	
5. USER ADMINISTRATION	8
5.1. CREATING USERS AND USER AUTHORIZATIONS	8
5.2. DOCUMENTATION OF USER ACTIVITIES	12
5.3. OPERATION WITHOUT CONNECTION TO THE PC (offline operation)	14
5.4. DELETING USERS AND USER AUTHORIZATIONS	15
<hr/>	
6. FURTHER MENU FUNCTIONS	15
6.1. UPDATE	15
6.2. INFORMATION	15
6.3. END	15
<hr/>	
7. NOTES	16
<hr/>	

1. PURPOSE OF THIS DOCUMENT

This document describes the functions of the administration software provided in conjunction with the ekey® TOCAhome pc.

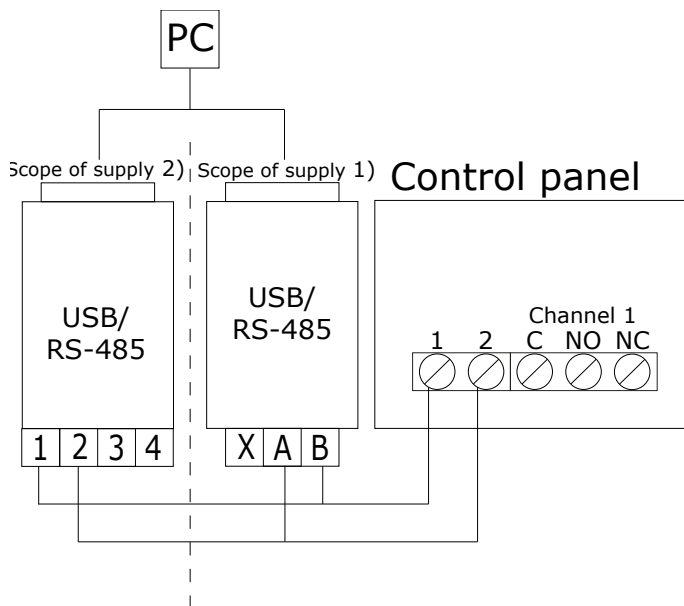
2. SYSTEM REQUIREMENTS

The ekey® TOCAhome pc administrator software operates exclusively on Microsoft Windows XP, Microsoft Windows 2000 or Microsoft Windows 2003 platforms.

3. ASSEMBLY, INSTALLATION AND INITIAL USE

The software can be used for the first time after the control and scanner panels have been properly initialized. (You will find the required information in your ekey® TOCAhome operating instructions.)

Install the software provided on the CD ROM on your computer and make sure that the included RS 485 interface cable on the control panel is connected to the USB converter and that the USB converter is connected to your computer (USB cable included).



Installation

The USB serial interface is listed under Connections (COM and LPT) in the popup window of the device manager. The example shows COM3.

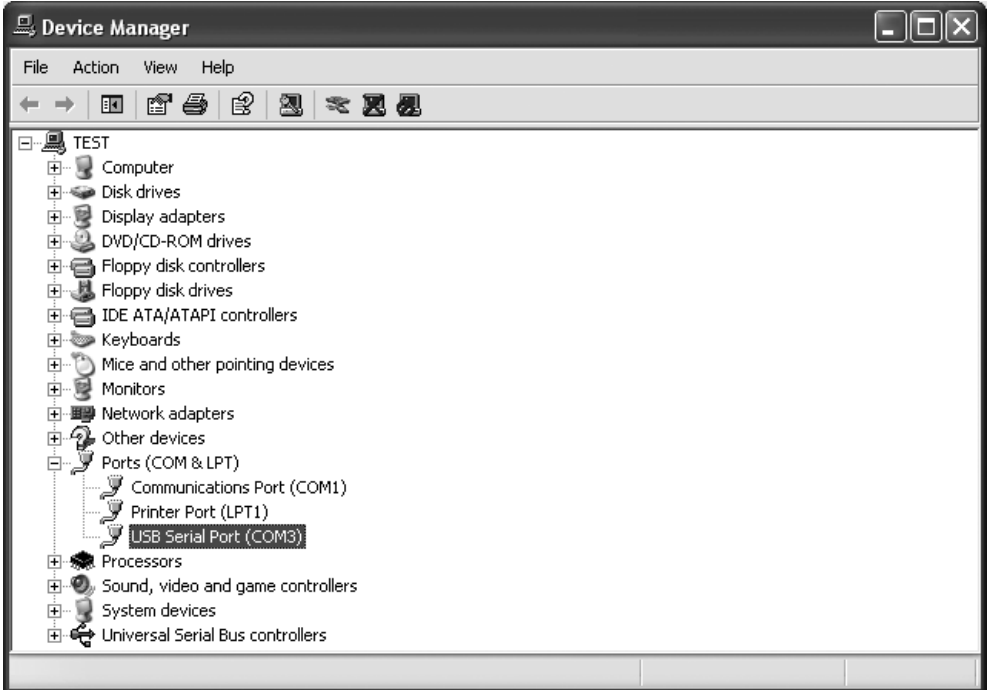


Figure A

All other TOCAhome pc settings (such as Save Finger) can be defined by using the PC and the ekey® TOCAhome pc software.

4. CONFIGURATION AND SETTINGS

4.1. CONFIGURATION

The window shown in Figure B is displayed after the program is started.

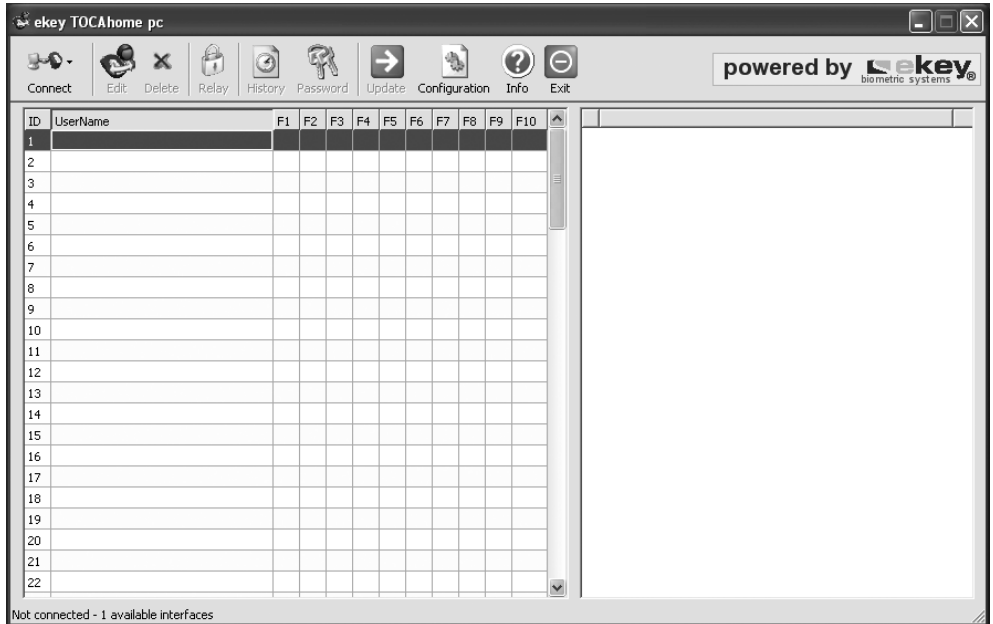


Figure B

Press the Configuration menu button to go to the window shown in Figure C.

Configuration

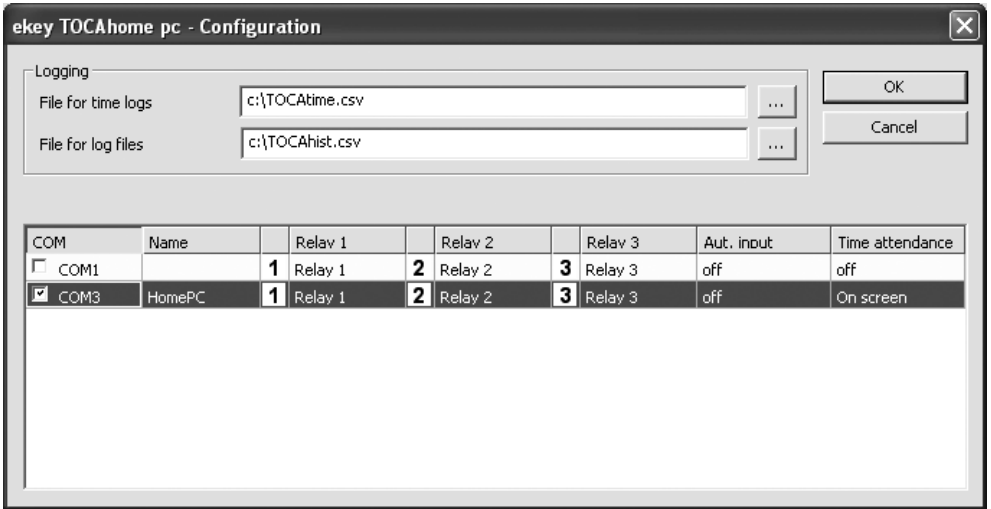


Figure C

RECORD

Change the file names and directories in this field for recording user activities.

COM

The COM column lists the COM interfaces available on the PC. Choose the COM port assigned to the USB serial port. (compare Figure A)

NAME

A name can be assigned to the connected ekey® TOCAhome pc unit in this column. In this example, the name Home PC was selected.

RELAY 1, RELAY 2, RELAY 3

The individual relays can be named according to their respective functions. For example, relay 1 was called Test.

AUT. ENTRY

If the "Aut. Entry" function is activated, the software writes the name of the authorised person at the current cursor position.

The ekey® TOCAhome pc unit is positively identified. This can be, for example, in a Word or Excel file. Selecting On + TAB inserts a tab character after each name. Selecting On + CR inserts a new line after each name.

TIME RECORDING

ON: User activities are recorded in the TOCAtime.csv file. If the file is write protected, the data are buffered and added after the protection has been lifted. A file named STOP can also prevent writing and the data are added from the buffer after the STOP file is removed. (The STOP file must be in the same directory as the TOCAtime.csv file.) MONITOR: All registered activities are additionally output to the right side of the program window. (*compare Figure J*)

4.2. CREATING A CONNECTION

The "Connect" menu (*compare Figure B*) can be used to establish a connection between the PC and the ekey® TOCAhome pc unit (after selecting the correct COM interface). This opens the window shown in Figure D. The manufacturer's default password is "1234" (in older versions it is "ekey"). Activate the OK button after entering the password.

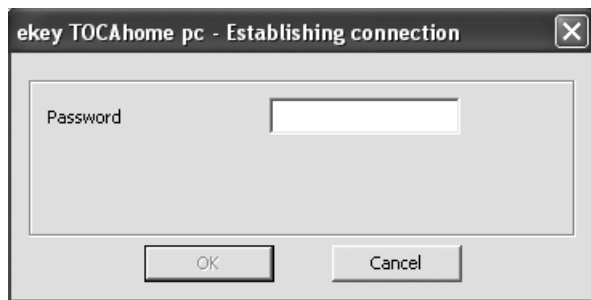


Figure D

4.3. CHANGING THE PASSWORD

Use the Password menu button to change the password. You will be required to enter the current password in order to select a new one.



Figure E

4.4. RELAY SWITCH TIMES

The *Relay* menu button is used to change the switch times of the corresponding relays (compare Figure E). The maximum relay switch time that can be set is 255 seconds.

5. USER ADMINISTRATION

5.1. CREATING USERS AND USER AUTHORIZATIONS

As soon as the connection is established, a new user can be created using the Edit button in the menu bar shown in Figure B. You can also use the mouse and double click in an empty line. The window shown in Figure F is displayed.

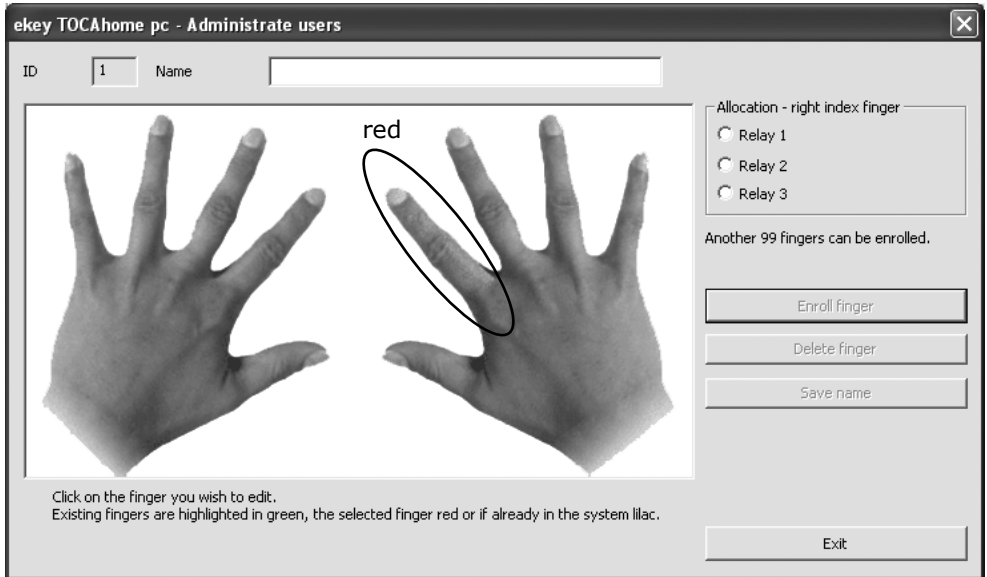


Figure F

Select a name by clicking on a finger with the mouse cursor. The selected finger is displayed in red. This finger must now be assigned to a relay with which it is to be coupled. The example in Figure F assigns the right pointer finger to the Test relay. The Save Finger button then becomes active. After pushing the Save Finger button, the respective user must draw his/her finger across the sensor field of the external unit. The newly saved finger is displayed in blue. Suggestions for making perfect finger recordings are found in the ekey® TOCAhome pc operating instructions.

Operation

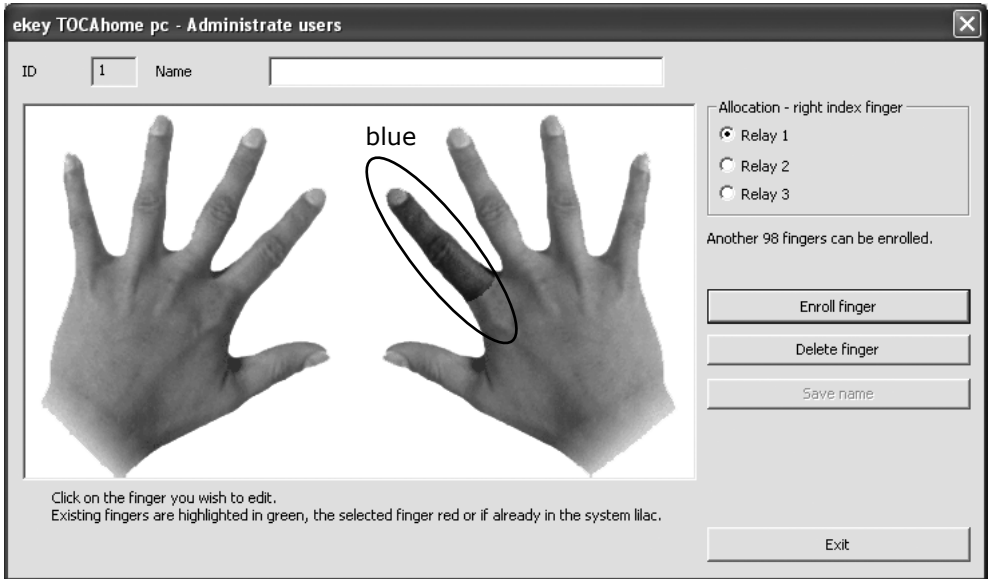


Figure G

Other fingers may now be saved. Fingers already in use appear green as shown in Figure H.

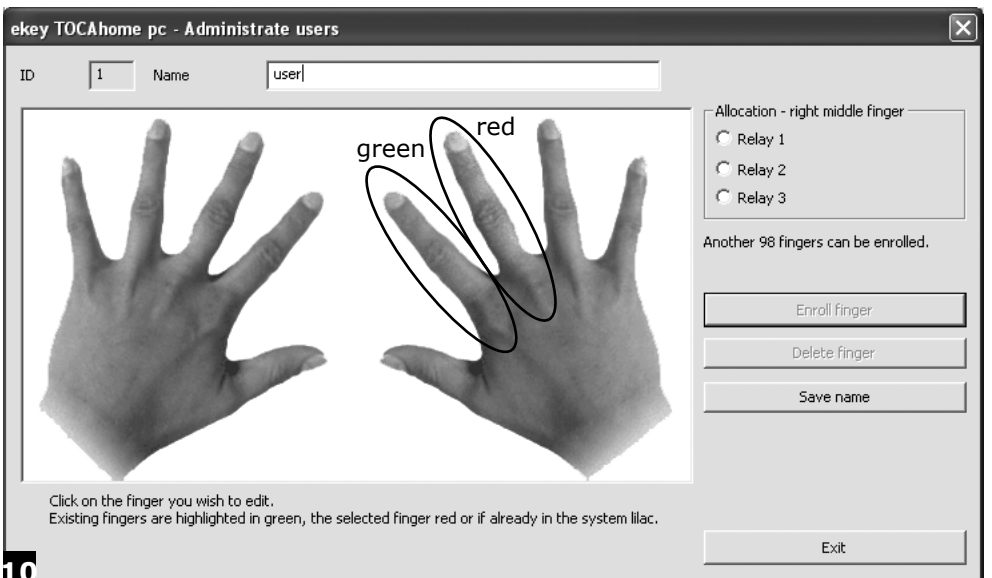


Figure H

The Delete Finger button is used to cancel authorizations assigned to a user. When deleted, the finger is no longer marked and can be assigned at any time.

The End button is used to return to the window shown in Figure B.

The names of saved users are listed at the left of the window (see Figure I). Each user is assigned an ID. Assignments of relays to users' fingers are displayed in this area. The fingers are designated F1 through F10, beginning with the small finger of the left hand. The number of the relays that can be activated with each finger is displayed in the corresponding field of the finger of each user.

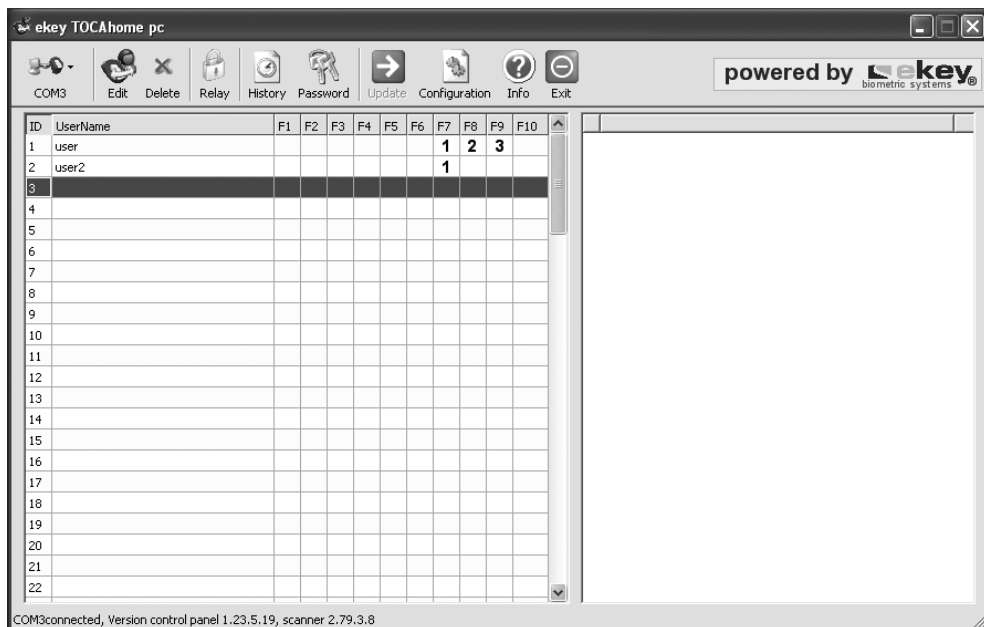


Figure I

Recording

5.2. DOCUMENTATION OF USER ACTIVITIES

ekey® TOCAhome pc offers two different possibilities to protocol user activities:

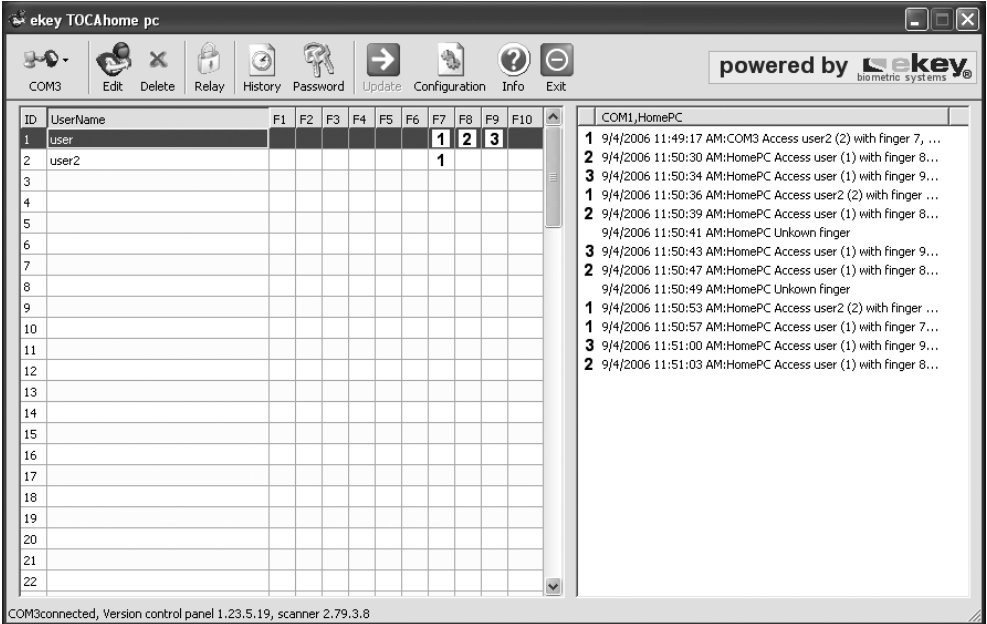


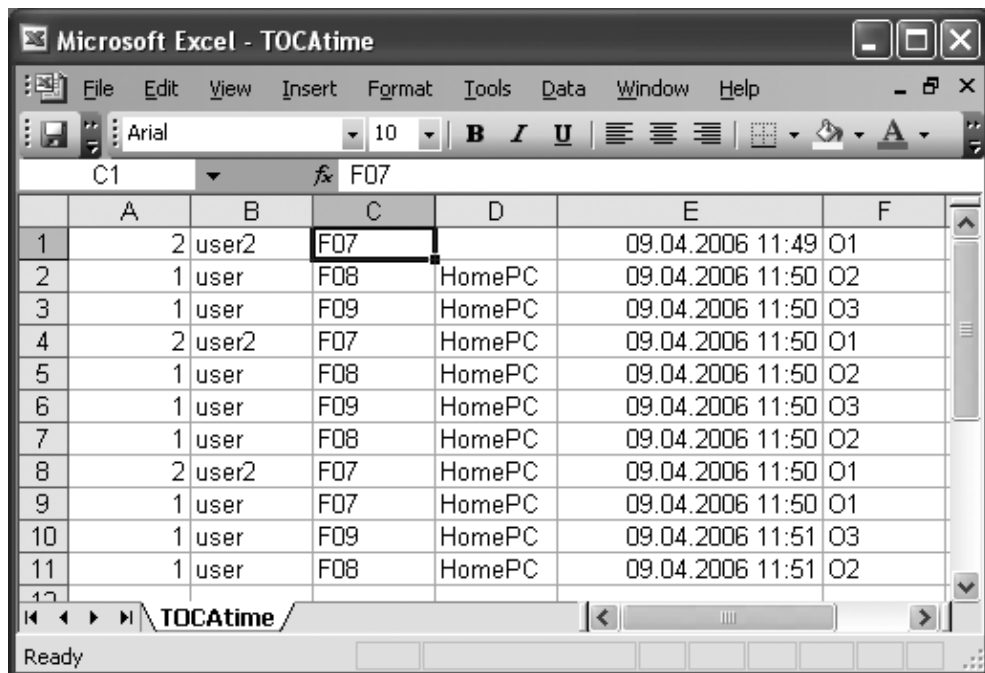
Figure J

A TIME RECORDING:

Time recording is used to protocol which relay was opened at which time and by which user using which finger. If misuse is detected (unknown user), the point in time at which the attempt was made is recorded in the protocol.

Time recording can be activated in the configuration menu (see Chapter 4). As an option, the user data are save exclusively in the TOCAtime.csv file or additionally to the monitor (see Figure J).

The example (see Figure K) shows that user 2 (User ID 2) opened relay 01 with finger F07 on 11 January 2006 at 1:28pm.



	A	B	C	D	E	F
1	2	user2	F07		09.04.2006 11:49	O1
2	1	user	F08	HomePC	09.04.2006 11:50	O2
3	1	user	F09	HomePC	09.04.2006 11:50	O3
4	2	user2	F07	HomePC	09.04.2006 11:50	O1
5	1	user	F08	HomePC	09.04.2006 11:50	O2
6	1	user	F09	HomePC	09.04.2006 11:50	O3
7	1	user	F08	HomePC	09.04.2006 11:50	O2
8	2	user2	F07	HomePC	09.04.2006 11:50	O1
9	1	user	F07	HomePC	09.04.2006 11:50	O1
10	1	user	F09	HomePC	09.04.2006 11:51	O3
11	1	user	F08	HomePC	09.04.2006 11:51	O2

Figure K

The TOCAtime.csv file can be viewed and processed with an editor or by means of table calculation software (such as Microsoft Excel) as shown in Figure K.

A prerequisite for recording user activities is that the ekey® TOCAhome pc unit is connected to the PC with the USB cable and that the ekey® TOCAhome pc software is running on the PC. It is not necessary to establish a connection between the ekey® TOCAhome pc software and the ekey® TOCAhome pc unit. (This connection is automatically cancelled ten minutes after a connection is established).

B LIST:

Time recording is not possible if the ekey® TOCAhome pc software is not running, the PC is switched off or the USB cable is not connected to the PC. In this case, the ekey® TOCAhome pc external unit saves the last 100 user activities (user id, finger number, activity (enrolled, matched, not matched), relay).

Recording

	A	B	C	D	E	F	G
1	1	F07	enrolled	O1			
2	1	F08	enrolled	O2			
3	1	F09	enrolled	O3			
4	0		not matched				
5	2	F07	enrolled	O1			
6	1	F07	enrolled	O1			
7	1	F08	enrolled	O2			
8	1	F09	enrolled	O3			
9	2	F07	enrolled	O1			
10	2	F07	matched	O1			
11	1	F08	matched	O2			

Figure L

Activating the "List" menu button copies the last 100 user activities from the external unit and saves them in the TOCAhist.csv file (see Figure L). The PC must be connected to the ekey® TOCAhome pc unit (see Chapter 4.2).

NOTE: TIME DATA ARE NOT RECORDED IN THE LIST

5.3. OPERATION WITHOUT CONNECTION TO THE PC (offline operation)

When not connected to a PC, the assigned relays can still be switched with the saved fingers. The programming menu of the internal unit can also be used to record fingers without the ekey® TOCAhome pc software (see ekey® TOCAhome operating instructions).

When the ekey® TOCAhome pc software is started up, the data from the external unit (newly recorded fingers) are automatically compared with the data in the ekey® TOCAhome pc software.

After offline operation the programme should be restarted on the PC. New users and fingers saved during offline operation are automatically transferred to the user list shown in Figure B.

5.4. DELETING USERS AND USER AUTHORIZATIONS

The Delete button is used to delete the currently marked user and all authorizations assigned to him/her.

Individual user authorizations can be cancelled as described under 5.1. by deleting the respective finger assignment.

6. FURTHER MENU FUNCTIONS

6.1. UPDATE

If new firmware versions for the external or internal unit are available, these can be updated with the ekey® TOCAhome pc software. It is mandatory that the update files are located in the directory from which the ekey® TOCAhome pc software was started. (In standard installations this directory is C:\Programme\ekey\TOCAhomepc.) The PC must be connected to the ekey® TOCAhome pc unit (see Chapter 4.3, Establishing a connection). As soon as these requirements are fulfilled, the Update menu button is no longer greyed out and can be activated. Attention: The connection between the PC and the ekey® TOCAhome pc unit may not be interrupted during updating. (Do not unplug the USB cable.)

6.2. INFORMATION

Selecting the Information menu button displays information about the software.

6.2. QUIT

Selecting the „Quit“ menu button exits the program.

ACHTUNG:

When the ekey® TOCAhome pc software is not running, time recording is not possible (see Chapter 5.2).

